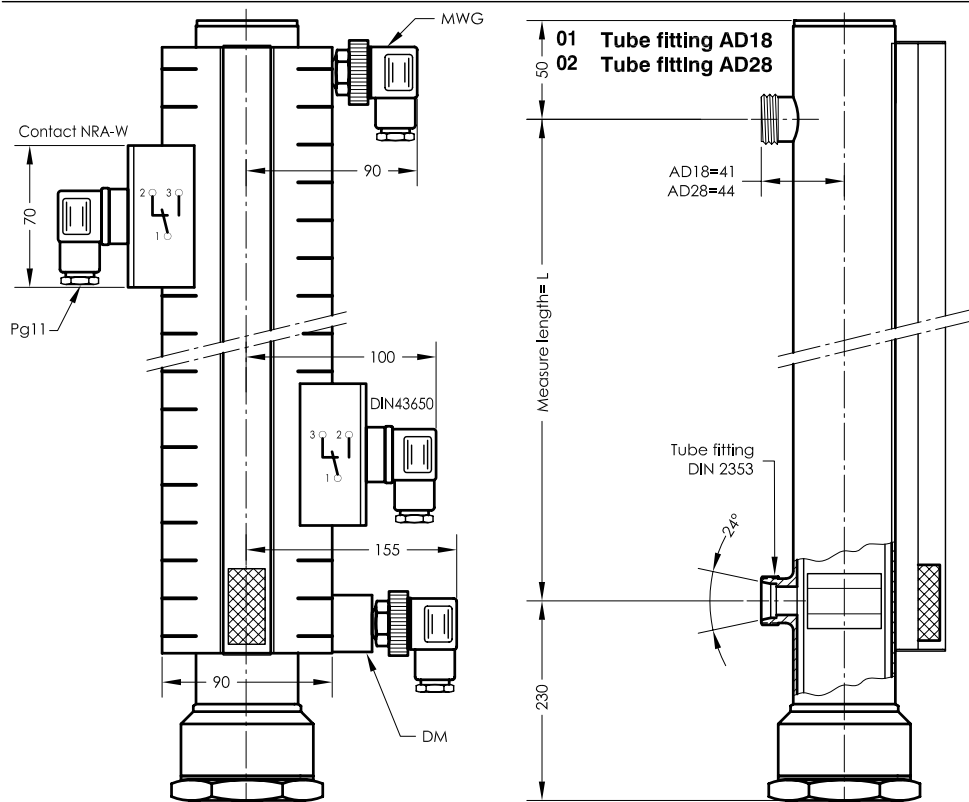


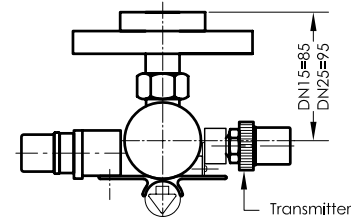
# NRA 25/...

## Level controller for surface mounting

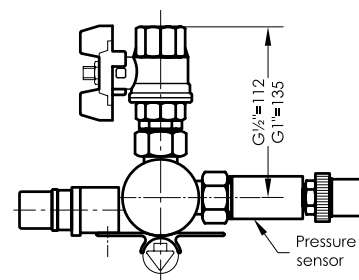
serial No. Date  
AM-GB- 201 11/02



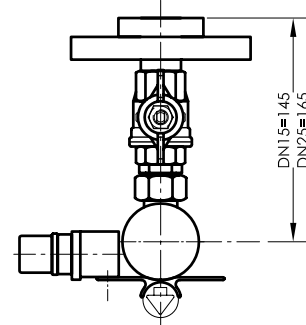
- 03 Flange DN15 DIN2656
- 04 Flange DN25 DIN2656



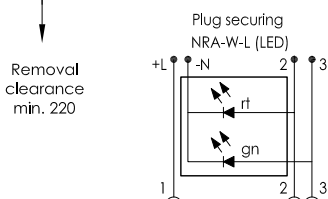
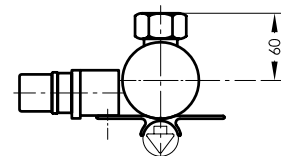
- 05 Ball valve G1/2" DIN228
- 06 Ball valve G1" DIN228



- 07 Ball valve/flange DN15
- 08 Ball valve/flange DN25

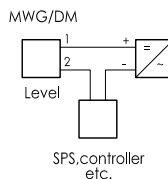


- 09 Welding cone 28L



### Plug securing

- 1= +24VDC
- 2= Level



### Specimen order

#### NRA 25 / 07 x 2000-3/NRA-W-MWG

##### Connection

- 01 Tube fitting AD18
- 02 Tube fitting AD28
- 03 Flange DN15
- 04 Flange DN25
- 05 Ball valve G1/2"
- 06 Ball valve G1"
- 07 Ball valve/flange DN15
- 08 Ball valve/flange DN25
- 09 Welding cone 28L

Transmitter type MWG

Pressure sensor type DM  
(specify pressure range)

Number of level contact  
Type: NRA-W/NRA-W-L

Measure length=L in mm

### Description

The level controller type NRA 25/... is designed for surface mounting on containers as communicating vessels. Visual level mounting takes place without external energy via a magnetically coupled indicating float in a transparent tube.

By connecting infinitely adjustable, bistable electromagnetic changeover contacts to the visual indicating scale, various control options can be configured.

On request contact type NRA-W-L with LED display can be fitted. For continuous remote transmission, a transmitter can be fitted. A pressure sensor can be used for pressure monitoring. The output signal is 4-20 mA. Electrical connection to the voltage supply and to one or several controllers, stored program controller or measuring instruments can take place with a standard two-core twisted cable. The cable can be of any length.

The types of connection are optional; other types available on request.

### Technical data

Nominal pressure	25 bar max.
Float type	Stainless steel, max. L=6000 mm
Medium temperature	120°C max.
Medium density	0,72 kg/dm <sup>3</sup> min.
Float	Stainless steel type MD25
Level contacts	bistable changeover contacts
NRA-W	230V ≈ max
NRA-W-L	24-230V max (LED)
Current switch	1A max
Switching capacity	60 W/VA max
Pressure sensor/	DM/MWG
Transmitter	12-30 VDC
Measuring range	4-20 mA
Contact pitch	7,5 mm
Linearity	0,5%
Load	RB= U-12V 20mA

Level controller are resistant to: mineral oil, hydrous solution, phosphoric ester, triglyceride (rape oil), synthetic ester, polycyclicols.



**GOLDAMMER**  
REGELUNGSTECHNIK GMBH

FELDSTRASSE 24 A  
P.O.BOX 10 02 17  
D-40802 METTMANN

PHONE (49) 2104/12093  
FAX (49) 2104/12028

www.Goldammer-Regelungstechnik.com