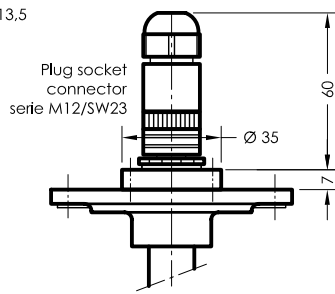
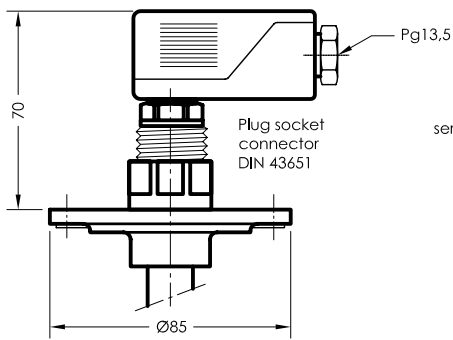


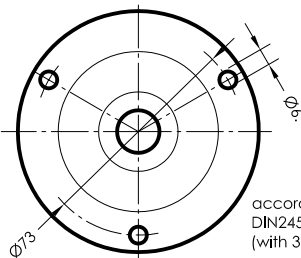
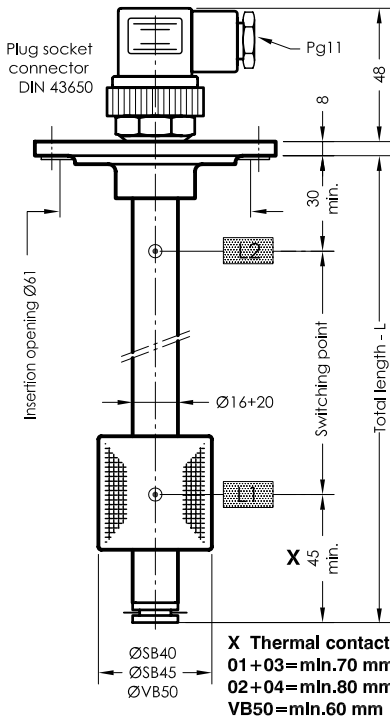
# NR 85

## Level regulator for tank insert

serial No. Date  
IN-GB- 108 11/02

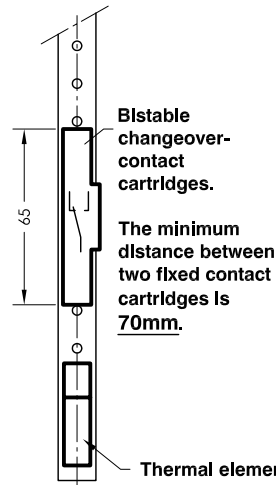


**Types**  
M12/4 = 4-channel  
M12/8 = 8-channel

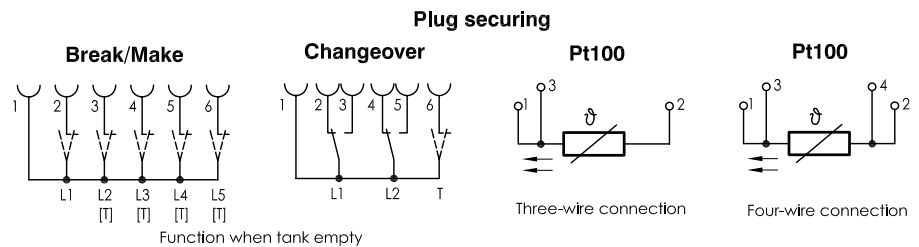
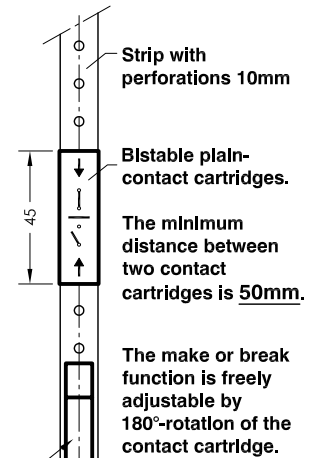


according to  
DIN24557 part 2  
(with 3 borings)

### Level contact -04-



### Level contact -03-



### Specimen order

## NR 85 -SB45-L370-03-L1/300/S-T70Ö- M12/4

Float type  
SB40  
SB45  
VB50

Total length-L  
switching tube (mm)  
standard length  
L = 280  
L = 370  
L = 500  
L = 800

Level contact type  
01 = fixed, plain  
02 = fixed, changeover  
03 = adjustable, plain  
04 = adjustable, changeover

Pt100  
Sensor  
Thermal contact  
T55Ö (S)  
T60Ö (S) (Ö preferred)  
T70Ö (S)  
T80Ö (S)

Switching point L1-L5/  
mm from sealing edge

Ö = break  
S = make  
W = changeover  
Function with  
Increasing level

### Description

The level regulator type NR 85 for tank insert is a solenoid switch operating without contact with the function of monitoring and regulating liquid levels and temperatures.

The switching tube contains bistable protective gas contacts. They may be fixed or alternatively mounted as an adjustable contact cartridge on a perforated strip. For fixed contacts, the contact intervals and their functions must be given. Plain contact cartridges can be subsequently adjusted for height. The function of make or break can then be altered by turning the cartridge through 180° degrees.

The permanent magnet built into the float switches the contacts when the level changes. The switching difference (hysteresis) is 4 mm. For temperature monitoring and regulation, thermal elements such as Pt100, Sensors and thermal contacts can be additionally incorporated. The level controller is maintenance-free when nondeposit media are used.

### Technical data

Switching tube	Brass, Ø 16 max.L = 1000mm Brass, Ø 20 max.L = 2000mm
Connection flange	Al, with flat seal
Nominal pressure	1 bar max., float hard-PU SB40/45 10 bar max., float stainless steel VB50
Temperature of medium	100°C max.
Level contacts	bistable make/break/changeover optional fixed or adjustable
Plug socket connector	DIN 43650 or DIN 43651 IP65 or serie M12 IP68
Switching current	1A max.
Switching potential	Contact type 01+03 20 W/VA max. 220V AC max. Contact type 02+04 60 W/VA max. 250V AC/DC max.
Thermal elements	Pt100, sensor, thermal contact
Number of functions	max. 5 can be incorporated
*Thermal contact	Sheet TR-GB-507



**GOLDAMMER**  
REGELUNGSTECHNIK GMBH

FELDSTRASSE 24 A PHONE (49) 2104/12093  
P.O.BOX 10 02 17 FAX (49) 2104/12028  
D-40802 METTMANN www.Goldammer-Regelungstechnik.com