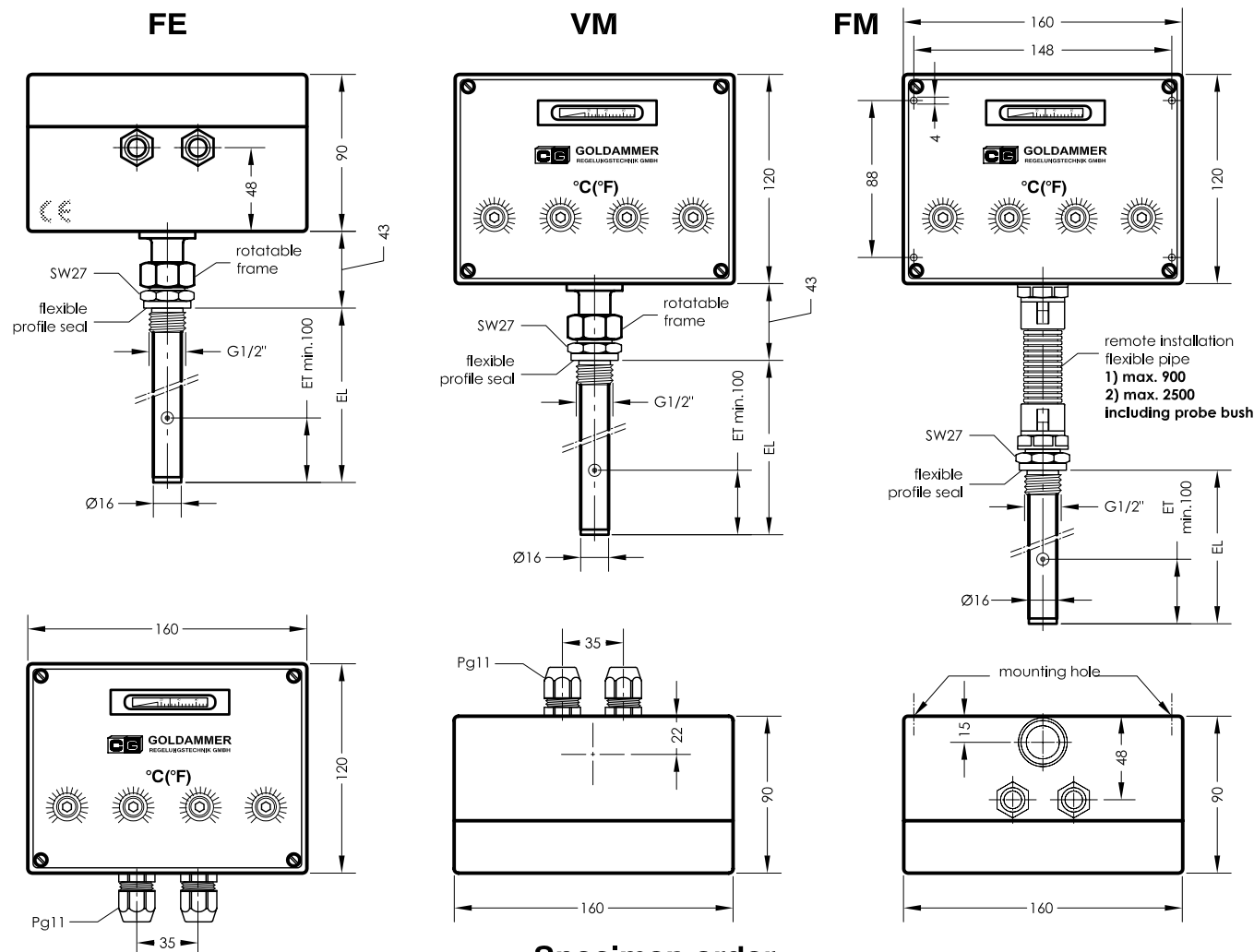


TR 15 - K3 / K4

Temperature - Capillary tube - Regulator

serial No. Date
TR-GB- 501 12/02



Specimen order

TR 15 - K3 - A - FM - 400 - 1 - II

I = 0 to 120°C
II = 32 to 248°F
III = 0 to 80°C

Temperature
K3= 3 contacts
K4= 4 contacts

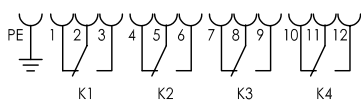
1 = flexible pipe 900
2 = flexible pipe 2500

A= Indication of actual temperature
O= without display

EL= length of Immersion tube (mm)
100 (L100= max. 3 functions)
200
300
400
500
800
900

FE= permanent installation
VM= vertical installation
FM= remote installation

Terminal diagram



Function under switching temperature

ET= minimum immersion depth in the medium for the probe to archive an exact measurement.

Description

The TR 15 - K3 / K4 temperature capillary tube regulator works on the principle of liquid extension

A change of temperature in the probe causes a change in volume. This force operates a potential free changeover contact through a membrane. The desired switching temperatures can be set separate. The range lies between 0 and 120 °C, (32 to 248°F), (0 to 80°C). On request the devices will be supplied with a display of actual temperature. The probes are located in an immersion tube. The cable connections are made with connection terminal strips of 1,5 mm². The device is also available with gold contacts on request.

With optional plug socket connector DIN 43651 IP65 and serie M12/SW23 IP68.

Technical data

Switch cabinet	ABS with transparent cover
Protection class	IP 65
electric. connection	Cable thread Pg.11 Connection terminal strip 1,5 mm ²
Probe bush	Brass
Operating pressure	16 bar max.
Ambient temperature	-40 to 80°C
Temperature display	0 to 120°C ±2%
Temperature relay	Changeover cont. max 250V~, 10A min. 5 mA
Temperature range	0 to 120°C, (32 to 248°F), (0 to 80°C)
Switching accuracy	3k
Switching difference	~ 5k



GOLDAMMER
REGELUNGSTECHNIK GMBH

FELDSTRASSE 24 A PHONE (49) 2104/12093
P.O.BOX 10 02 17 FAX (49) 2104/12028
D-40802 METTMANN www.Goldammer-Regelungstechnik.com